

斜导轮式输送机 Line-shaft roller conveyor

MODEL <BWLS-SERIES>

可用于储积、分岐、合流部分的输送工作。
由线轴的传动方式安静、干净安全、皮带驱动，滚筒安装方便，输送能力强等优点。
在物流流水线及分拣物流线中应用广泛。

The model " BWLS-SERIES" Live Roller "Spool" Conveyor is a general transport conveyor with the capabilities of accumulating products with "back-pressure". Quiet operation , versatile design , easy installation and maintenance are standard features that make the "BWLS-SERIES" conveyor a valuable component in operation requiring high performance with minimal down time.

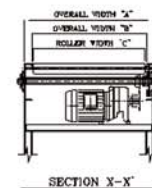
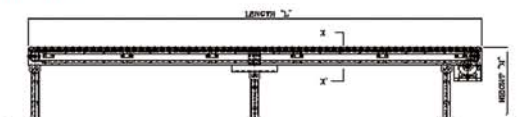
● SPECIFICATIONS ●

TREAD ROLLERS : $\Phi 50.8$, with a ball Bearing
RING BELT : $\Phi 4.76$, polyurethane belt
DRIVE SHAFT : 25mm S45C cold rolled steel shaft
COUPLINGS : Chain Sprocket #40
FRAME : 3.2T 114mm x 40mm x 20mm NC , steel frame ,
with joint coupling
LEG : 700mm~1,000mm(H)
SPEED : 20,000mmPM
BEARING : Precision , lubricated , ball bearing units with
steel housing (SBPP20525)
MOTOR DRIVE : 0.5HP , 1HP , 2HP / 220 , 380V / 3PH /
50HZ/ Horizontal gear motor
CHAIN TAKE-UP : provided on motor base
CAPACITY : 250kg per 3000(mm)
ELECTRICAL CONTROLS : available as option

● SPECIFICATIONS TABLE ●

| Overall Width "A" | Between Frames Width "B" "A"-76 | Roller Length "C" | Length "L" | Height "H" |
|----------------------|---------------------------------------|----------------------|---------------|---------------|
| 410(mm) | 334(mm) | Roller Length | 3,000(mm) | 260(mm) |
| 510(mm) | 434(mm) | = | 4,000(mm) | ~ |
| ~ | ~ | Between | 5,000(mm) | Adjustable |
| 1,010(mm) | 934(mm) | Frames | ~ | top of roller |

- You can order a table which is not standard size.



<< 为方便叉车和工作人员的过道通畅设置的O带驱动输送机方便与其他类型输送机搭配可用。

Manual Gates are available for use with a variety of conveyors. Gates provide a pass-ageway for personnel. lift trucks, and other equipment.